



MIAMI-DADE COUNTY, FLORIDA
METRO-DADE FLAGLER BUILDING
140 WEST FLAGLER STREET, SUITE 1603
MIAMI, FLORIDA 33130-1563
(305) 375-2901 FAX (305) 375-2908

BUILDING CODE COMPLIANCE OFFICE (BCCO)
PRODUCT CONTROL DIVISION

NOTICE OF ACCEPTANCE (NOA)

Moulding Associates Incorporated
933 Hensley Lane
Wylie, TX 75098

SCOPE:

This NOA is being issued under the applicable rules and regulations governing the use of construction materials. The documentation submitted has been reviewed by Miami-Dade County Product Control Division and accepted by the Board of Rules and Appeals (BORA) to be used in Miami Dade County and other areas where allowed by the Authority Having Jurisdiction (AHJ).

This NOA shall not be valid after the expiration date stated below. The Miami-Dade County Product Control Division (In Miami Dade County) and/or the AHJ (in areas other than Miami Dade County) reserve the right to have this product or material tested for quality assurance purposes. If this product or material fails to perform in the accepted manner, the manufacturer will incur the expense of such testing and the AHJ may immediately revoke, modify, or suspend the use of such product or material within their jurisdiction. BORA reserves the right to revoke this acceptance, if it is determined by Miami-Dade County Product Control Division that this product or material fails to meet the requirements of the applicable building code.

This product is approved as described herein, and has been designed to comply with the High Velocity Hurricane Zone of the Florida Building Code.

DESCRIPTION: Series "Elan, St. Charles or Delta" Opaque Outswing Wood Door w/ & w/out Sidelites

APPROVAL DOCUMENT: Drawing No. S-2226, titled "Stile & Rail 6'8 or 8'0 Opaque Wood Door Out-Swing Unit", sheets 1 through 10 of 10, prepared by R.W. Building Consultants, Inc., dated 5/16/02, with revision "LRL", dated 01/27/03, bearing the Miami-Dade County Product Control Approval stamp with the Notice of Acceptance number and approval date by the Miami-Dade County Product Control Division.

MISSILE IMPACT RATING: None

LABELING: Each unit shall bear a permanent label with the manufacturer's name or logo, city, state and following statement: "Miami-Dade County Product Control Approved", unless otherwise noted herein.

RENEWAL of this NOA shall be considered after a renewal application has been filed and there has been no change in the applicable building code negatively affecting the performance of this product.

TERMINATION of this NOA will occur after the expiration date or if there has been a revision or change in the materials, use, and/or manufacture of the product or process. Misuse of this NOA as an endorsement of any product, for sales, advertising or any other purposes shall automatically terminate this NOA. Failure to comply with any section of this NOA shall be cause for termination and removal of NOA.

ADVERTISEMENT: The NOA number preceded by the words Miami-Dade County, Florida, and followed by the expiration date may be displayed in advertising literature. If any portion of the NOA is displayed, then it shall be done in its entirety.

INSPECTION: A copy of this entire NOA shall be provided to the user by the manufacturer or its distributors and shall be available for inspection at the job site at the request of the Building Official. This NOA consists of this page 1 as well as approval document mentioned above.

The submitted documentation was reviewed by **Theodore Berman, P.E.**



TMB

NOA No 03-0416-01
Expiration Date: April 17, 2008
Approval Date: April 17, 2003
Page 1

MOULDING ASSOCIATES
"ELAN, ST. CHARLES OR DELTA SERIES"
 STILE & RAIL OPAQUE WOOD DOOR
 UP TO 8'4" x 8'0" OUTSWING WITH & WITHOUT SIDELITES

- GENERAL NOTES**
1. THIS PRODUCT IS DESIGNED TO COMPLY WITH THE FLORIDA BUILDING CODE.
 2. WOOD BUCKS BY OTHERS, MUST BE ANCHORED PROPERLY TO TRANSFER LOADS TO THE STRUCTURE.
 3. PRODUCT ANCHORS SHALL BE AS LISTED AND SPACED AS SHOWN ON DETAILS. ANCHOR EMBEDMENT TO BASE MATERIAL SHALL BE BEYOND WALL DRESSING OR STUCCO.
 4. DESIGNED PRESSURE RATING SEE TABLE PAGE 1.
 5. THIS PRODUCT MEETS THE WATER REQUIREMENTS FOR "HIGH VELOCITY HURRICANE ZONES" WITH THE USE OF THE HIGH DAM BUMP THRESHOLD.
 6. THIS SYSTEM REQUIRES WINDBORNE DEBRIS EXTERNAL PROTECTION AS PRESCRIBED IN SECTION 2413 OF THE FLORIDA BUILDING CODE.

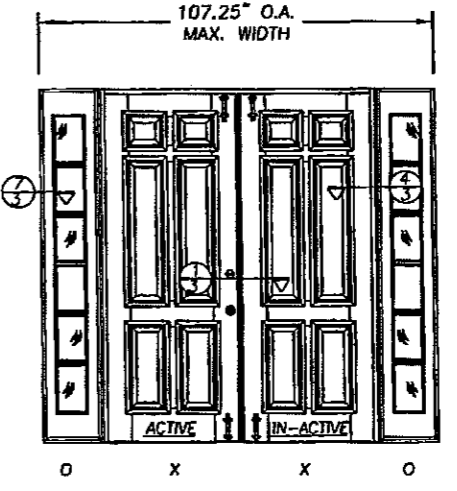
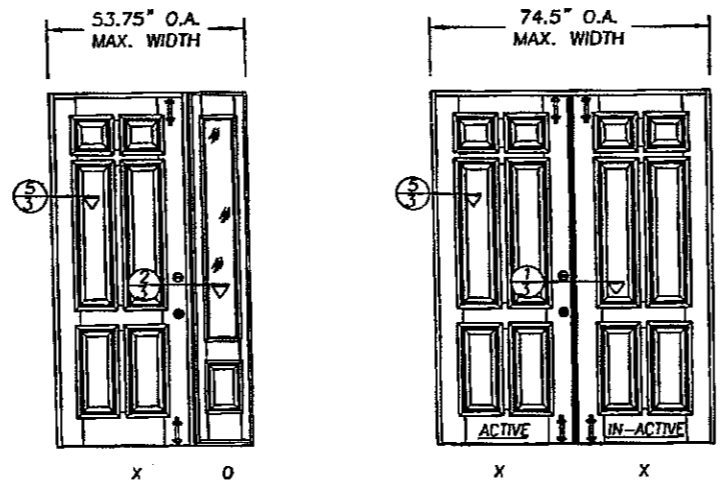
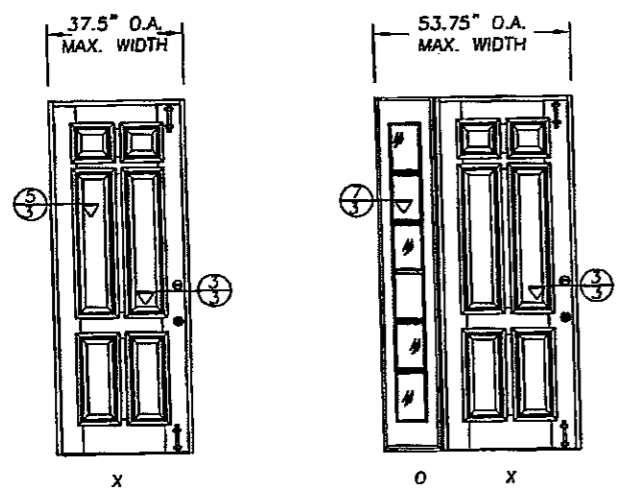
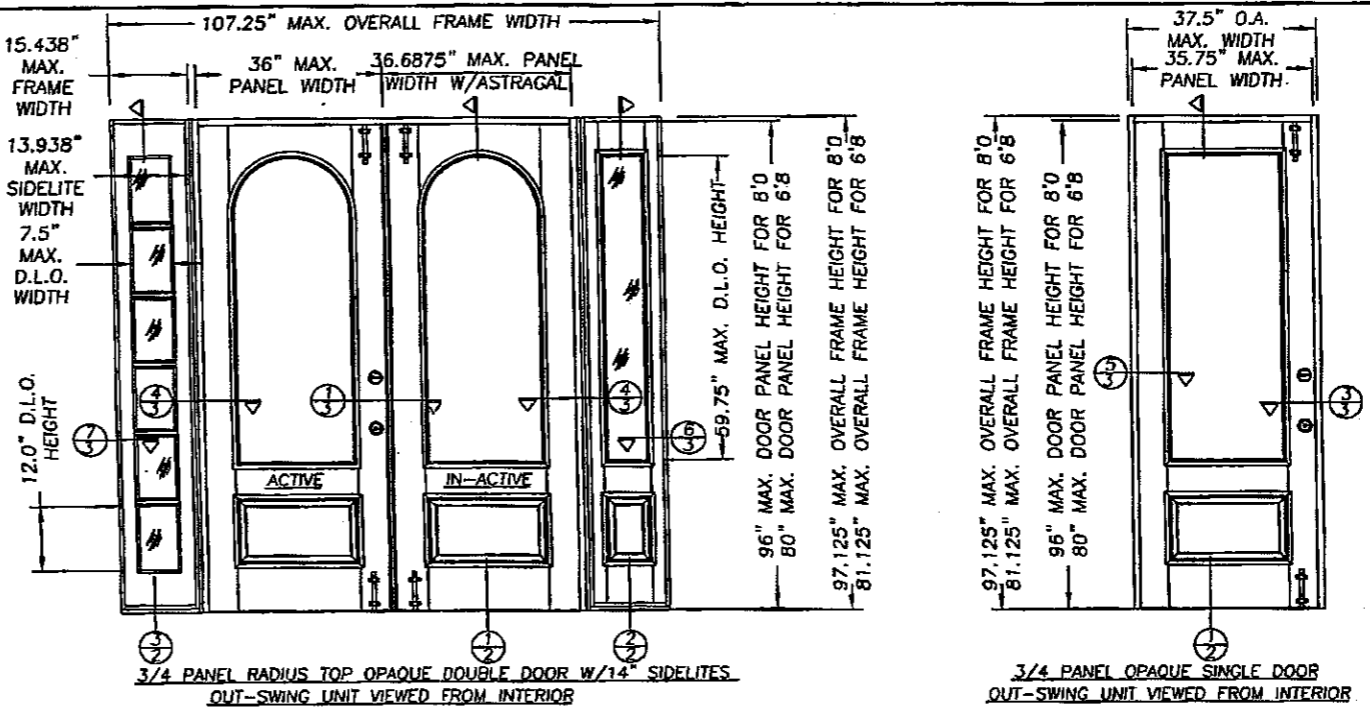
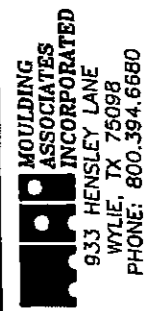


TABLE OF CONTENTS	
SHEET #	DESCRIPTION
1	TYPICAL ELEVATIONS & GENERAL NOTES
2	VERTICAL CROSS SECTIONS
3	HORIZONTAL CROSS SECTIONS
4	ANCHORING LOCATIONS & DETAILS
5	ANCHORING LOCATIONS
6	3/4 LITE DOOR STILE & RAIL DETAIL
7	3/4 LITE RADIUS TOP DOOR STILE & RAIL DETAIL
8	6 PANEL STILE & RAIL DETAIL
9	SIDELITE STILE & RAIL DETAIL
10	BILL OF MATERIALS, UNIT COMPONENTS & GLAZING DETAILS

DESIGN PRESSURE RATING (WHERE WATER INFILTRATION REQUIREMENT IS NEEDED)				
UNIT TYPE	WITH SURFACE BOLTS ON INACTIVE PANEL ONLY		WITH SURFACE BOLTS ON INACTIVE & ACTIVE PANEL	
	SINGLE	/		+ 67.0 PSF
DOUBLE	+ 47.0 PSF	- 47.0 PSF	+ 67.0 PSF	- 67.0 PSF
SINGLE & DOUBLE WITH SIDELITES	+ 47.0 PSF	- 47.0 PSF	+ 67.0 PSF	- 67.0 PSF

Approved as complying with the Florida Building Code
 Date: 02/17/03
 NOAR 03-0316-01
 Miami Trade Product Control
 By: *[Signature]*

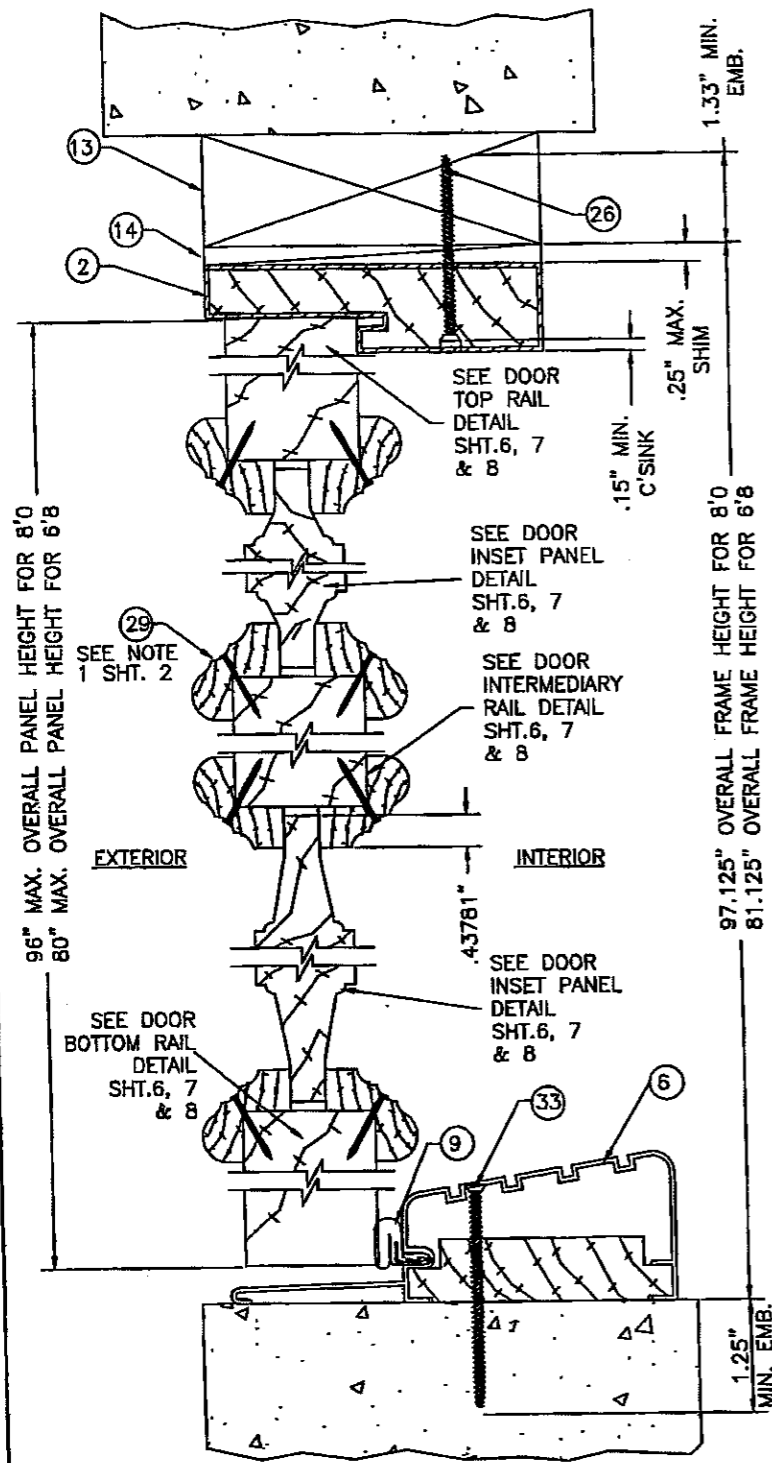
DATE: 5/17/02
 SCALE: N.T.S.
 DWG. BY: WLN
 CHK. BY: RW
 DRAWING NO.: S-2226
 SHEET 1 of 10



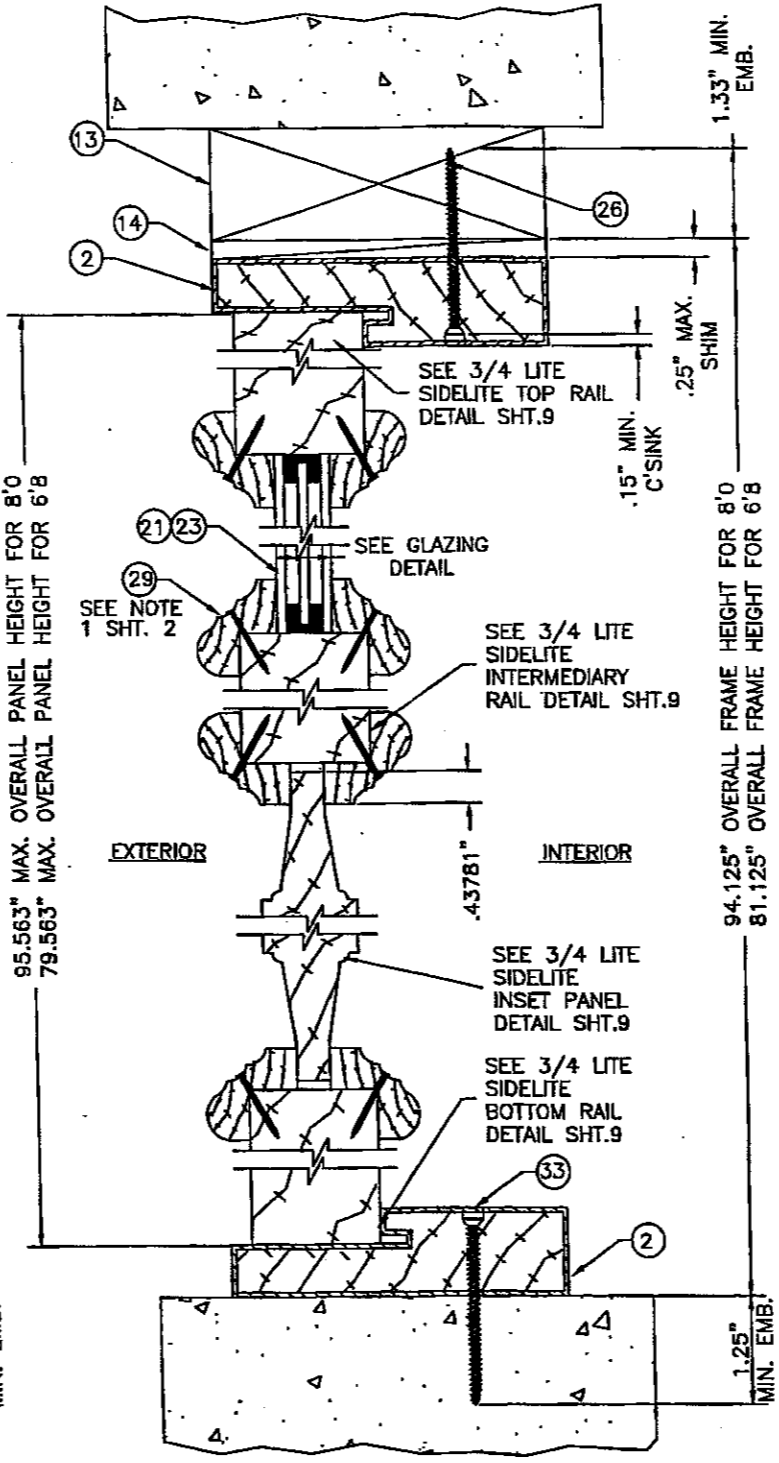
MOULDING ASSOCIATES INCORPORATED
 933 HENSLEY LANE
 WYLLIE, TX 75098
 PHONE: 800.394.6680

PRODUCT:		STILE & RAIL OPAQUE WOOD DOOR OUT-SWING UNIT	
PART OR ASSEMBLY:		TYPICAL ELEVATIONS & GENERAL NOTES	
NO.	DATE	ADD ANCHORS	BY
1	01/27/03		

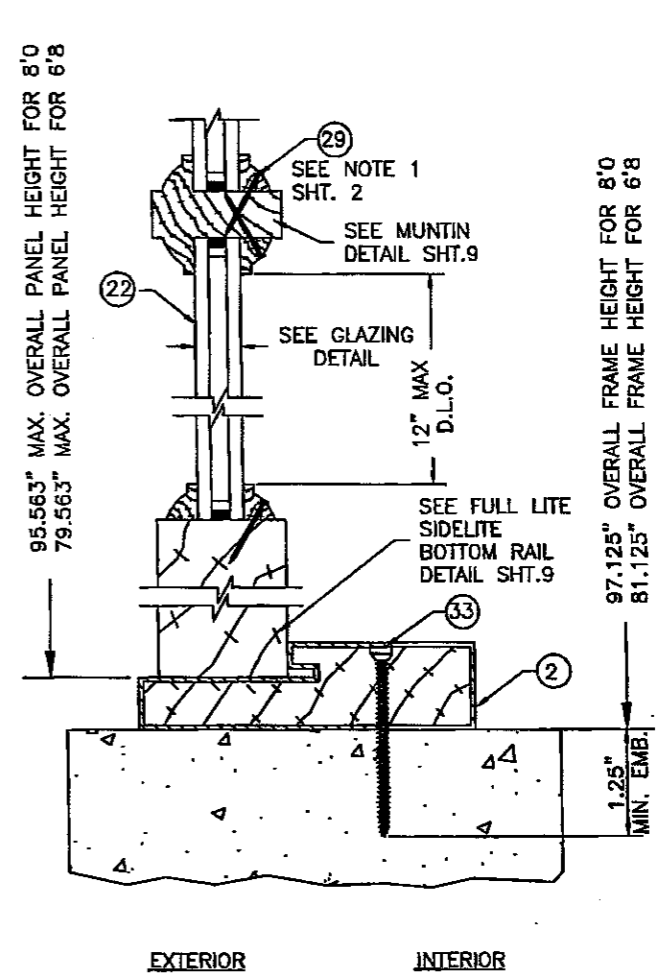
RW BUILDING CONSULTANTS, INC.
 813.684.3831



1 VERTICAL CROSS SECTION
2 3/4 LITE DOOR PANEL



2 VERTICAL CROSS SECTION
2 3/4 LITE SIDELITE



3 VERTICAL CROSS SECTION
2 FULL LITE SIDELITE

NOTES:
1. THE DECORATIVE TRIM IS APPLIED TO BOTH SIDES OF THE PANEL WITH ITEM #29 (16 GA. BRAD NAIL 1" L) LOCATED 1.0" FROM EACH END AN A MAX. 4.0" ON CENTER.

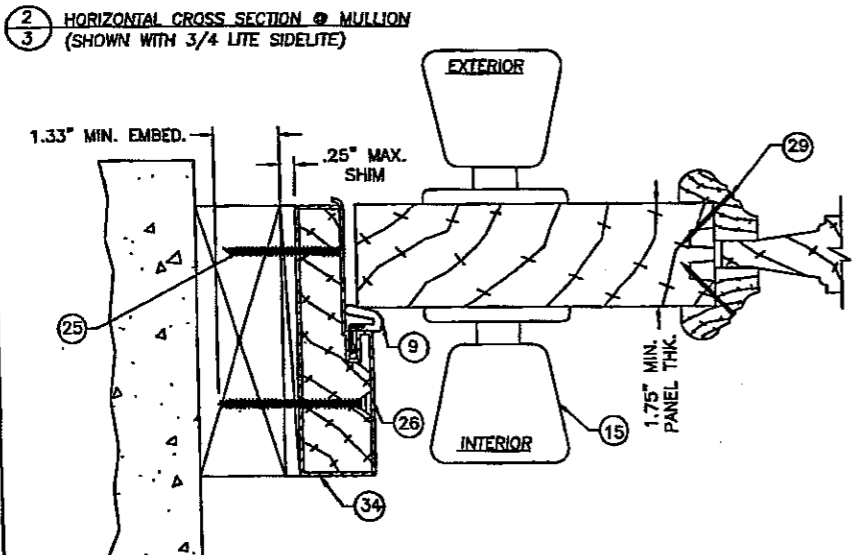
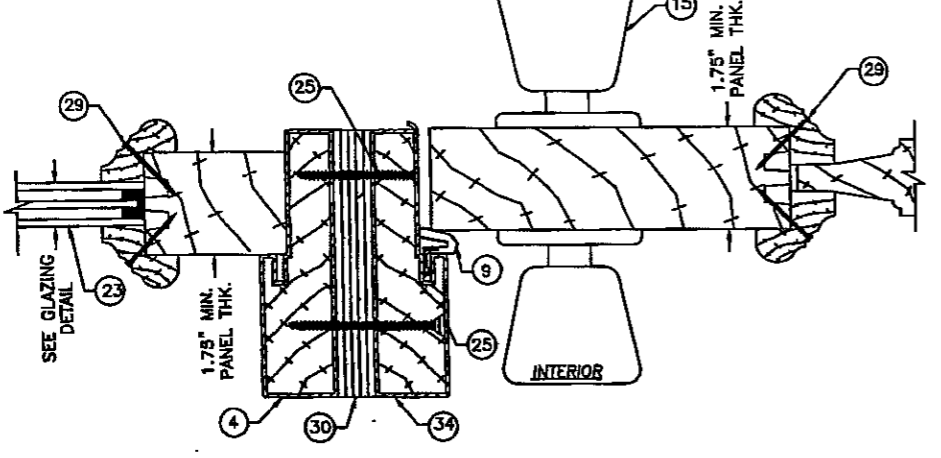
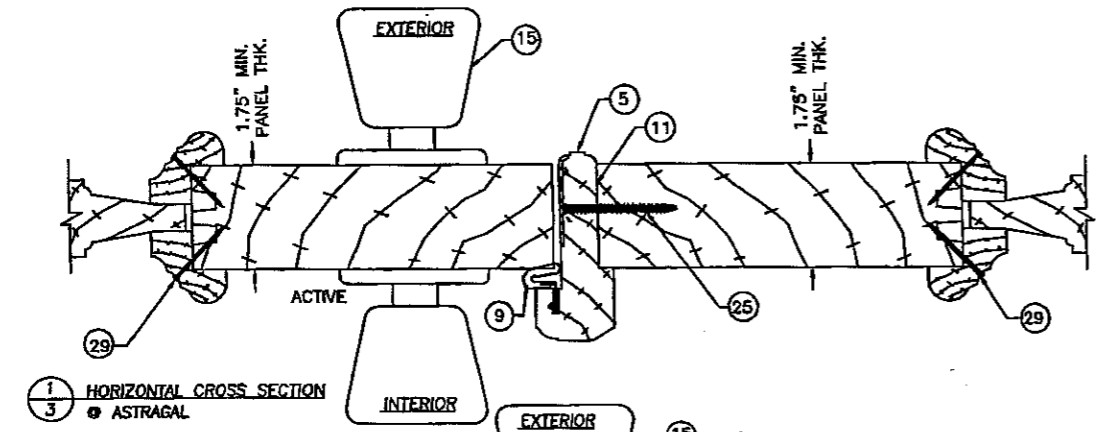
Approved as complying with the Florida Building Code
Date 04/11/03
NOA#03-0410-01
Miami Dade Product Control
Division
By: *Alonzo Bowman*

DATE:	5/17/02
SCALE:	N.T.S.
DWG. BY:	WLN
CHK. BY:	RW
DRAWING NO.:	S-2226
SHEET	2 OF 10

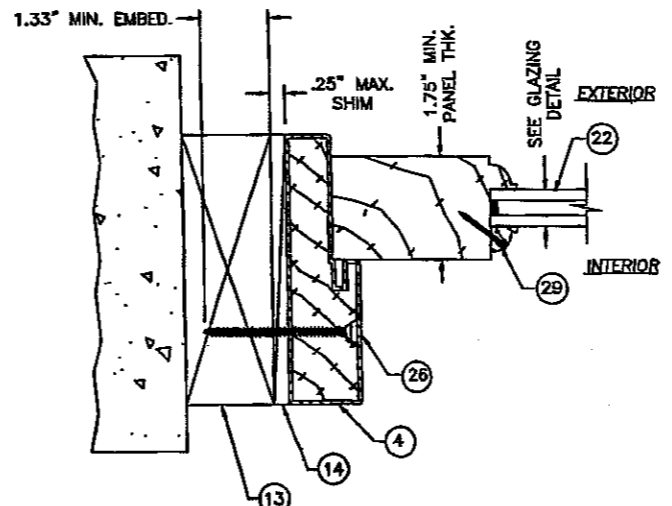
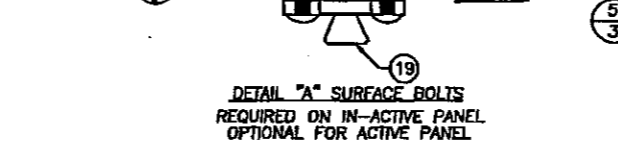
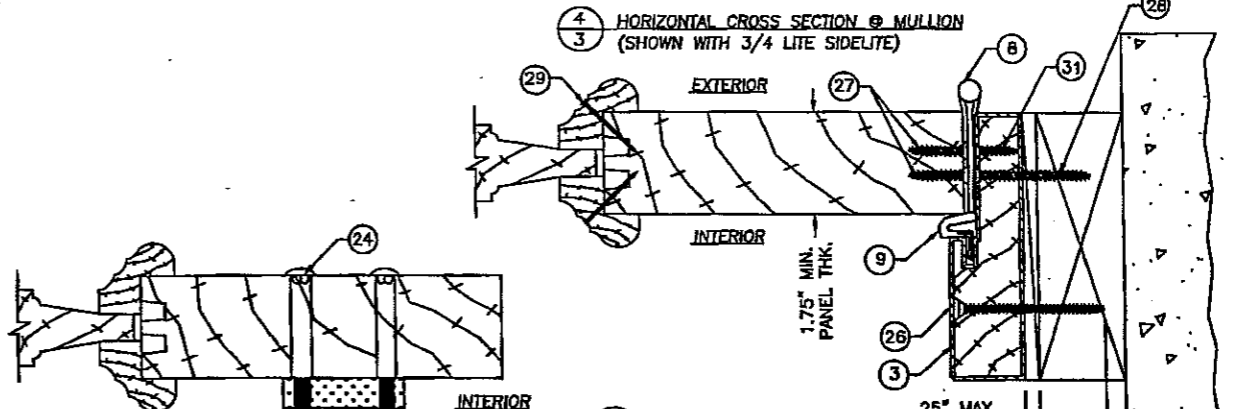
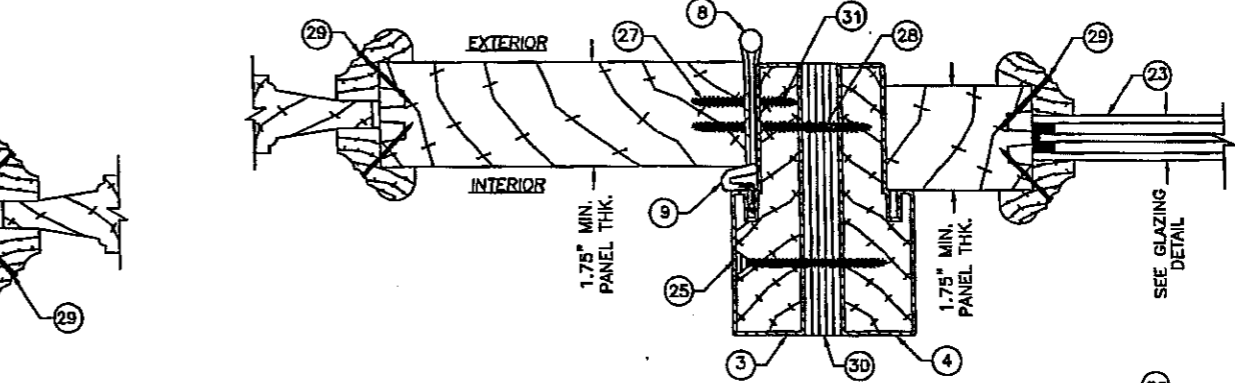
PRODUCT:	STILE & RAIL 6'8 OR 8'0 OPAQUE WOOD DOOR OUT-SWING UNIT
PART OR ASSEMBLY:	VERTICAL CROSS SECTIONS
NO.	1
DATE	01/27/03
ADD ANCHORS	LRL
REVISIONS	BY

MOULDING ASSOCIATES INCORPORATED
933 HENSLEY LANE
WYLIE, TX 75098
PHONE: 800.394.6680

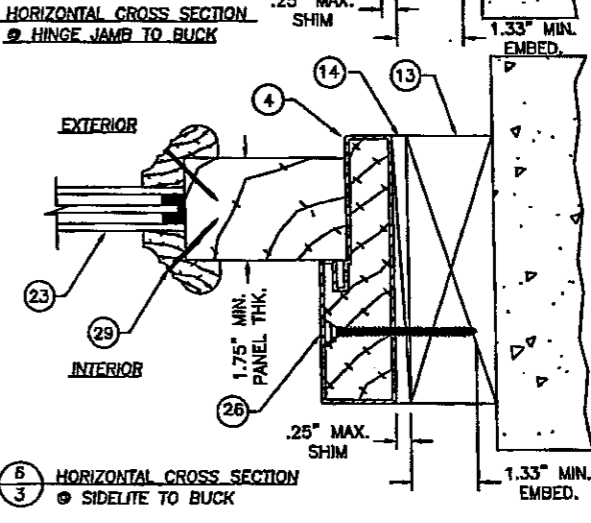
RW BUILDING CONSULTANTS, INC.
813.684.3831



3
3 HORIZONTAL CROSS SECTION @ LATCH JAMB TO BUCK



7
3 HORIZONTAL CROSS SECTION @ SIDELITE TO BUCK



6
3 HORIZONTAL CROSS SECTION @ SIDELITE TO BUCK

Approved as complying with the Florida Building Code
Date 03/17/03
NOAR 03-09/16.01
Miami Dade Product Control
Div. of
By: *Arvidas Korman*

MOULDING ASSOCIATES INCORPORATED
933 HENSLEY LANE
WYLIE, TX 75098
PHONE: 800.394.6680

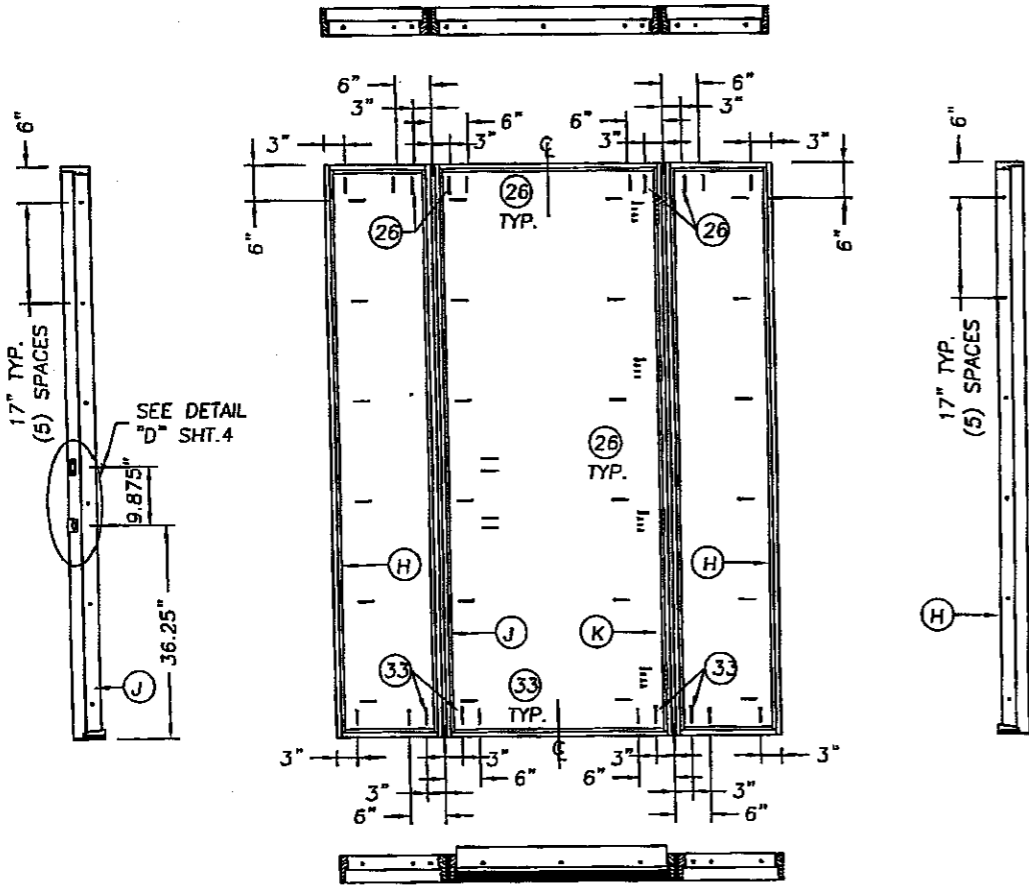
PRODUCT: STILE & RAIL
6"8 OR 8"0 OPAQUE
WOOD DOOR OUT-SWING UNIT
PART OR ASSEMBLY:
HORIZONTAL CROSS SECTION

NO.	DATE	ADD ANCHORS	BY
1	01/27/03		LRL

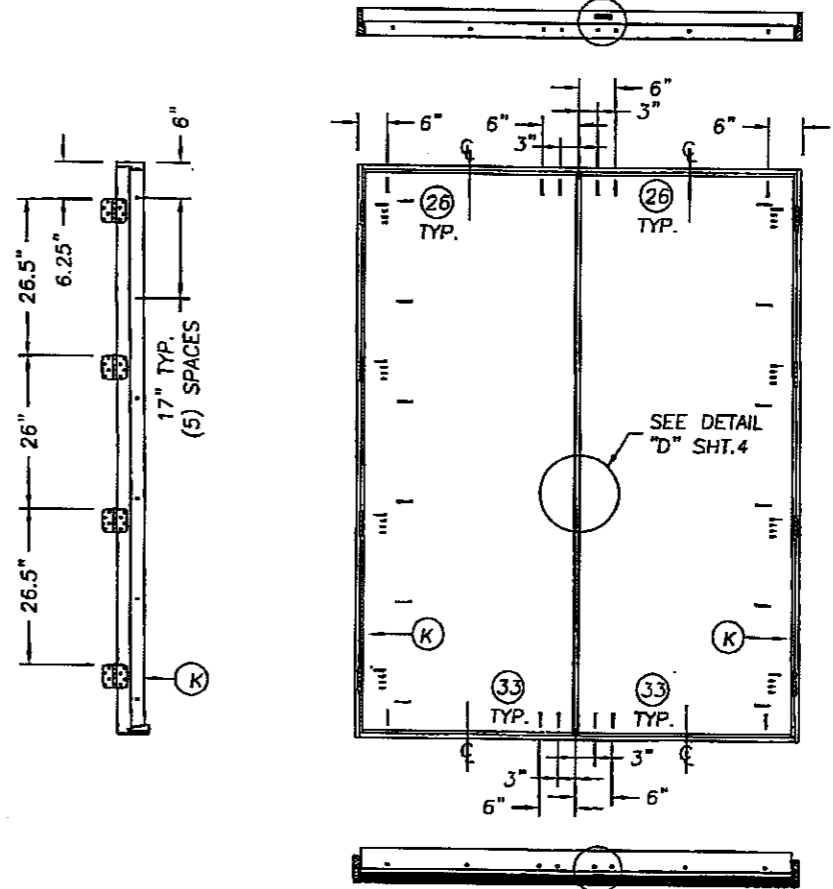
REVISIONS

RW BUILDING CONSULTANTS, INC.
813.684.3831

DATE: 5/17/02
SCALE: N.T.S.
DWG. BY: WLN
CHK. BY: RW
DRAWING NO.: S-2226
SHEET 3 OF 10



SINGLE DOOR W/SIDELITE



DOUBLE DOOR

MOULDING ASSOCIATES INCORPORATED
 933 HENSLEY LANE
 WYLE, TX 75098
 PHONE: 800.394.6680

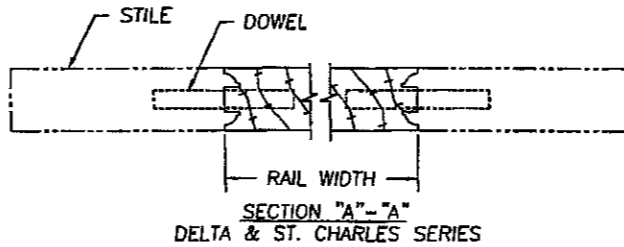
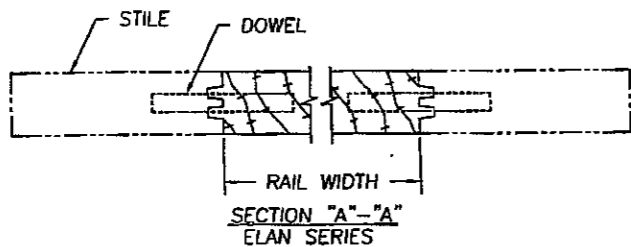
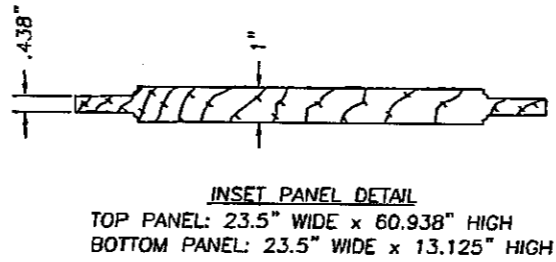
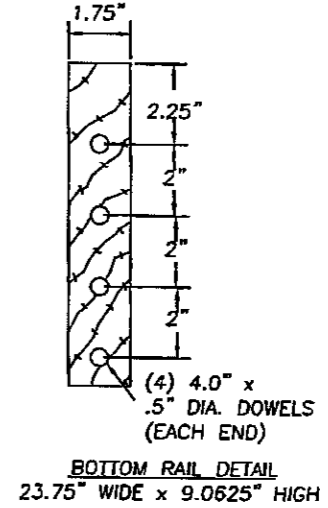
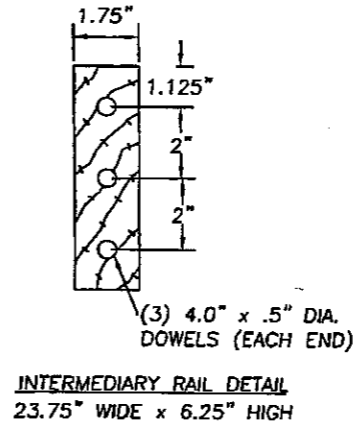
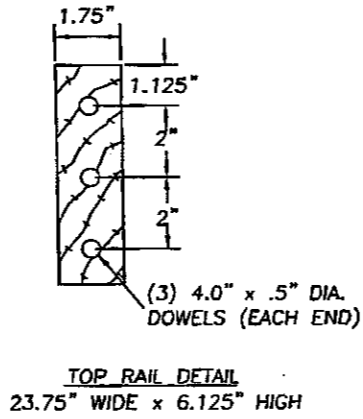
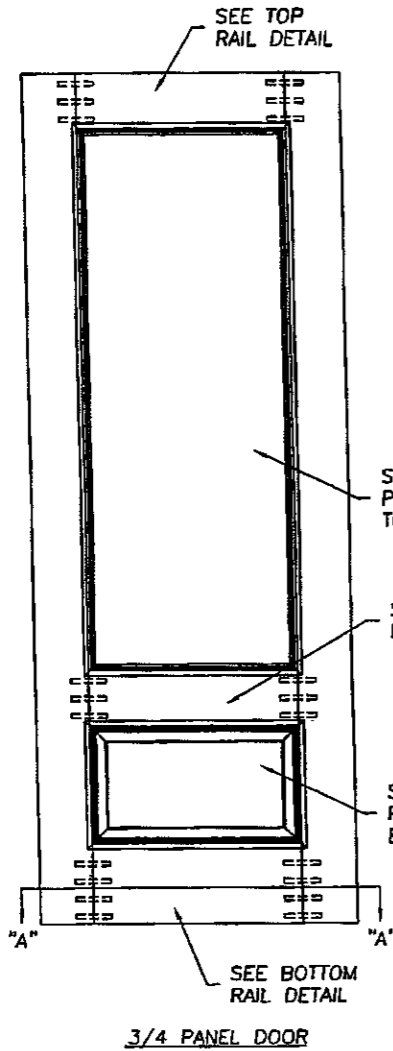
PRODUCT: STILE & RAIL
 6"8 OR 8"0 OPAQUE
 WOOD DOOR OUT-SWING UNIT
 PART OR ASSEMBLY:
 ANCHORING LOCATIONS

NO.	DATE	ADD ANCHORS	LR	BY
1	01/27/03			

RW BUILDING CONSULTANTS, INC.
 813.684.3831

Approved as complying with the Florida Building Code
 Date: 09/17/03
 RNOAED 3-0916.01
 Miami Dade Product Control
 Date: _____
 By: *Chandra Newman*

DATE: 5/17/02
 SCALE: N.T.S.
 DWG. BY: WLN
 CHK. BY: RW
 DRAWING NO.: S-2226
 SHEET 5 OF 10



MOULDING ASSOCIATES INCORPORATED
933 HENSLEY LANE
WYLIE, TX 75098
PHONE: 800.394.6680

PRODUCT: STILE & RAIL
6'8" OR 8'0" OPAQUE
WOOD DOOR OUT-SWING UNIT
PART OR ASSEMBLY:
3/4 PANEL DOOR
STILE & RAIL DETAIL

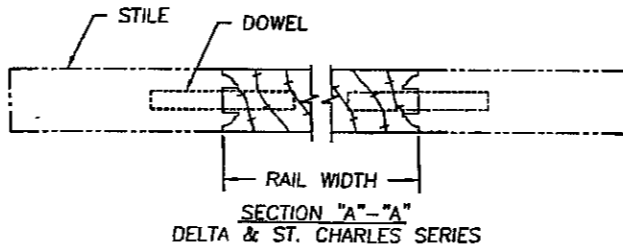
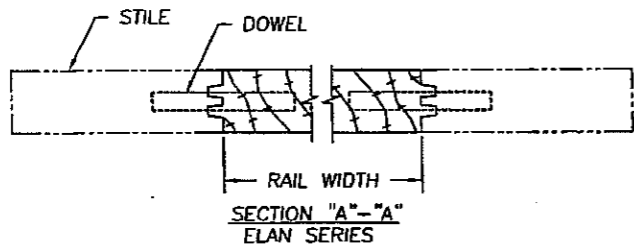
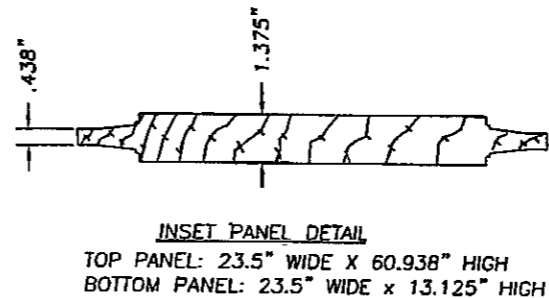
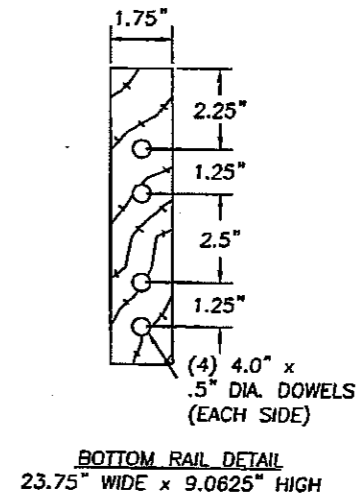
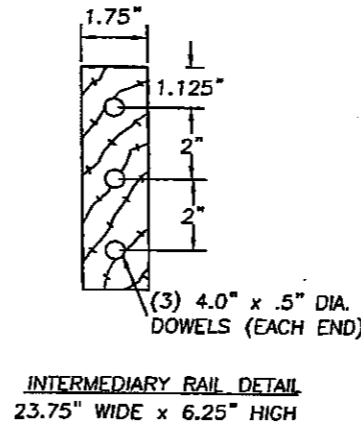
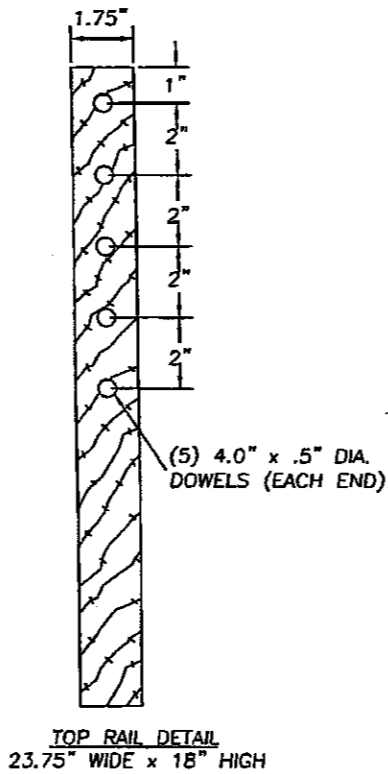
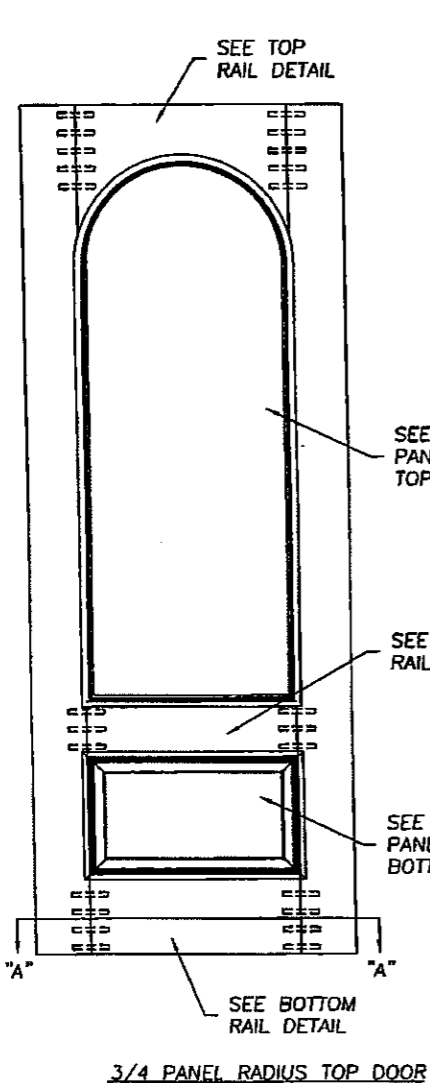
NO.	DATE	ADD ANCHORS	LRL	BY
1	01/27/03			

REVISIONS

RW BUILDING CONSULTANTS, INC.
813.684.3831

Approved as complying with the Florida Building Code
Date: 09/17/03
NOAS 03-0316.01
Miami Dade Product Control
By: *Colandrea Keenan*

DATE: 5/17/02
SCALE: N.T.S.
DWG. BY: WLN
CHK. BY: RW
DRAWING NO.: S-2226
SHEET 6 OF 10



MOULDING ASSOCIATES INCORPORATED
933 HENSLEY LANE
WYLIE, TX 75098
PHONE: 800.394.6680

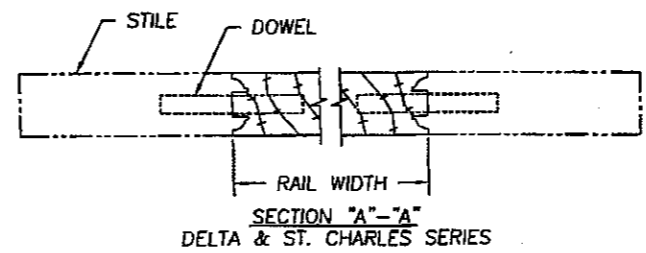
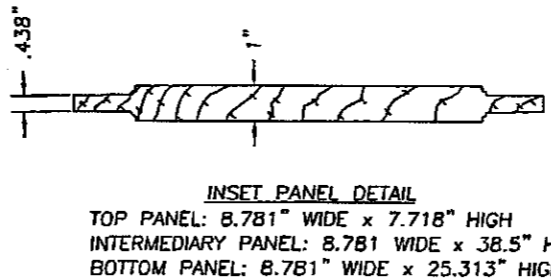
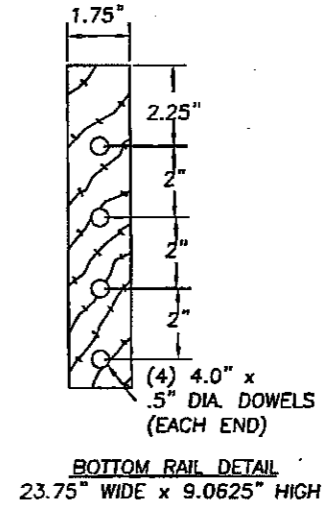
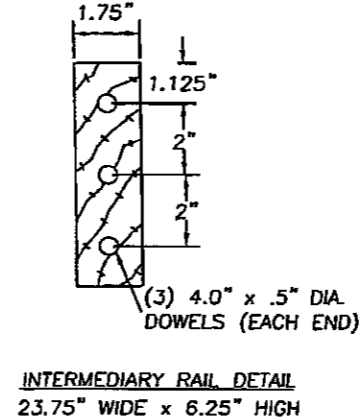
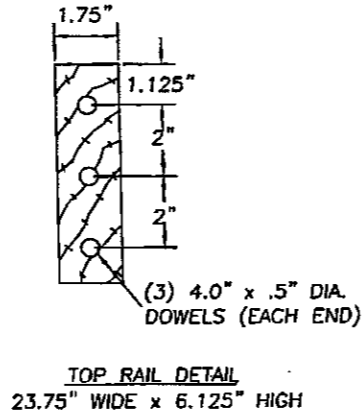
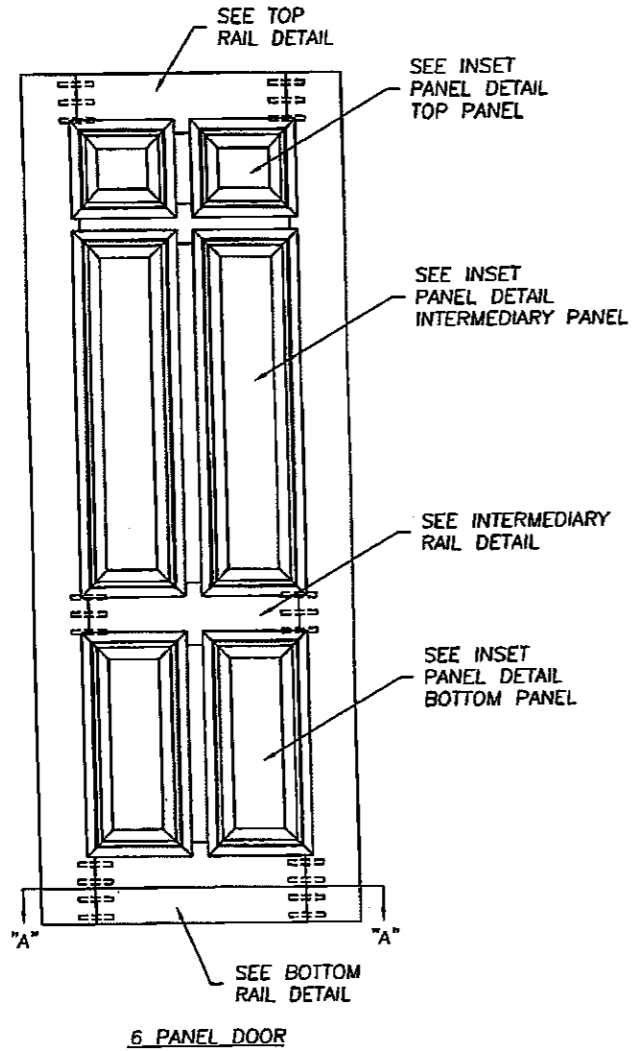
PRODUCT: STILE & RAIL
6"8 OR 8"0 OPAQUE
WOOD DOOR OUT-WING UNIT
PART OR ASSEMBLY:
3/4 PANEL RADIUS TOP DOOR
STILE & RAIL DETAIL

NO.	DATE	ADD ANCHORS	BY
1	01/27/03		

RW BUILDING CONSULTANTS, INC.
813.684.3831

Approved as complying with the Florida Building Code
Date: 04/13/03
NOAR 03-0416.01
Miscel Trade Product Control
By: *Charles Brown*

DATE: 5/17/02
SCALE: N.T.S.
DWG. BY: WLN
CHK. BY: RW
DRAWING NO.: S-2226
SHEET 7 OF 10



MOULDING ASSOCIATES INCORPORATED
933 HENSLEY LANE
WYLIE, TX 75098
PHONE: 800.394.6680

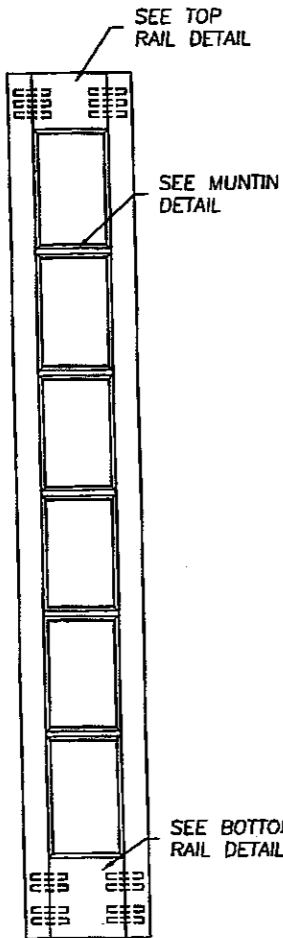
PRODUCT: STILE & RAIL
6'8" OR 8'0" OPAQUE WOOD DOOR OUT-SWING UNIT
PART OR ASSEMBLY: 6 PANEL DOOR
STILE & RAIL DETAIL

NO.	DATE	ADD ANCHORS	LRL	BY
1	01/27/03			

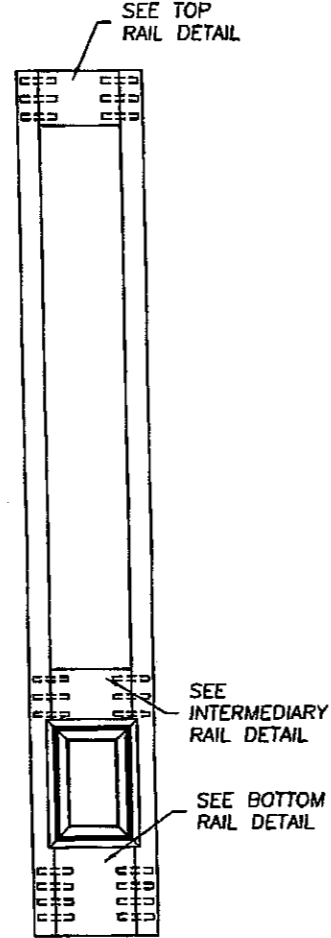
RW BUILDING CONSULTANTS, INC.
813.684.3831

DATE: 5/17/02
SCALE: N.T.S.
DWG. BY: WLN
CHK. BY: RW
DRAWING NO.: S-2226
SHEET 8 OF 10

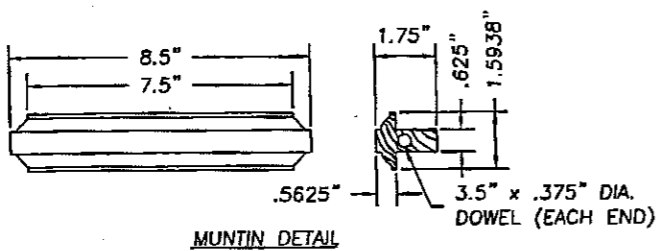
Approved as complying with the Florida Building Code
Date 04/17/02
MDAS 03-0416.01
Miami Dade Product Control
By *Charles Hanna*



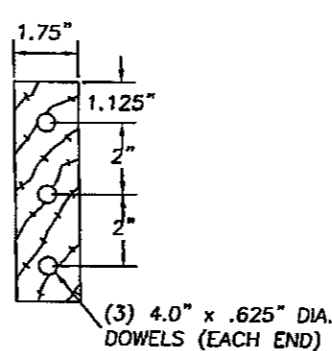
TRUE DIVIDED FULL LITE SIDELITE



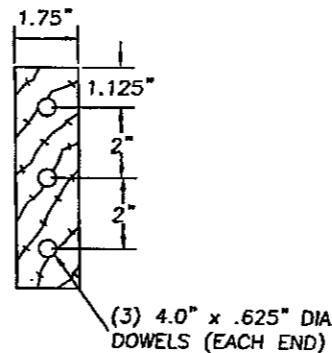
3/4 LITE SIDELITE



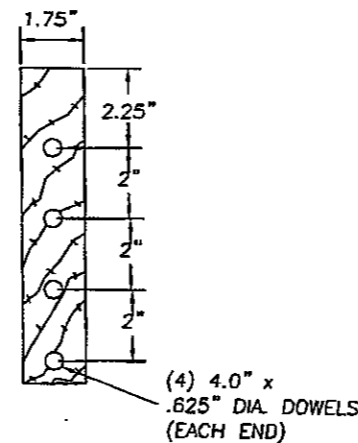
MUNTIN DETAIL



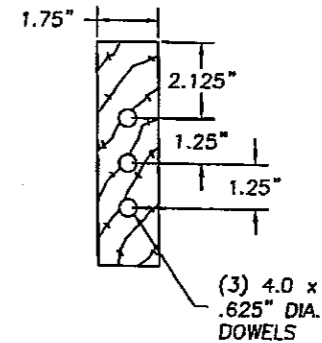
3/4 LITE SIDELITE TOP RAIL DETAIL
9.0" WIDE x 6.125" HIGH



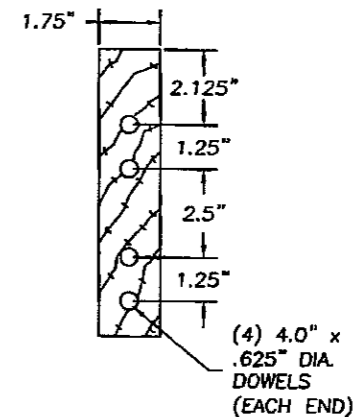
3/4 LITE SIDELITE INTERMEDIARY RAIL DETAIL
9.0" WIDE x 6.25" HIGH



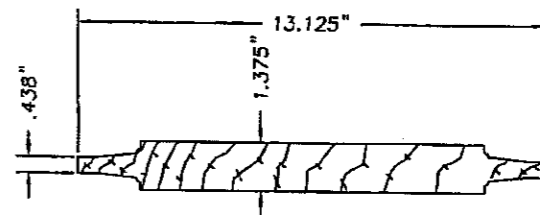
3/4 LITE SIDELITE BOTTOM RAIL DETAIL
9.0" WIDE x 9.625" HIGH



FULL LITE SIDELITE TOP RAIL DETAIL
8.5" WIDE x 6.25" HIGH



FULL LITE SIDELITE BOTTOM RAIL DETAIL
8.5" WIDE x 9.125" HIGH



INSET PANEL DETAIL
8.75" WIDE x 13.125" HIGH

Approved as complying with the Florida Building Code
 Date: 04/13/03
 NOAS 03-0316.01
 Miami Dade Product Control
 Div. 1
 By: *Glenn B...*

MOULDING ASSOCIATES INCORPORATED
 933 HENSLEY LANE
 WYLLIE, TX 75098
 PHONE: 800.394.6680

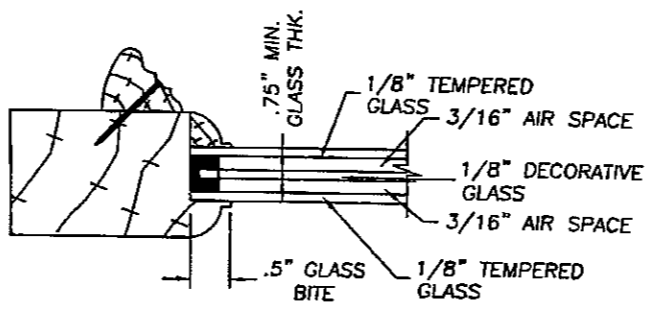
PRODUCT: STILE & RAIL
 6" OR 8" OPAQUE
 WOOD DOOR OUT-SWING UNIT
 PART OR ASSEMBLY:
 SIDELITE STILE & RAIL DETAIL

NO.	DATE	ADD ANCHORS	LRL	BY
1	01/27/03			

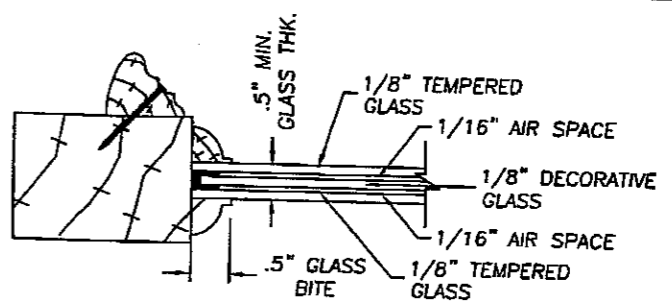
RW BUILDING CONSULTANTS, INC.
 813.684.3831

DATE: 5/17/02
 SCALE: N.T.S.
 DWG. BY: WLN
 CHK. BY: RW
 DRAWING NO.: S-2226
 SHEET 9 of 10

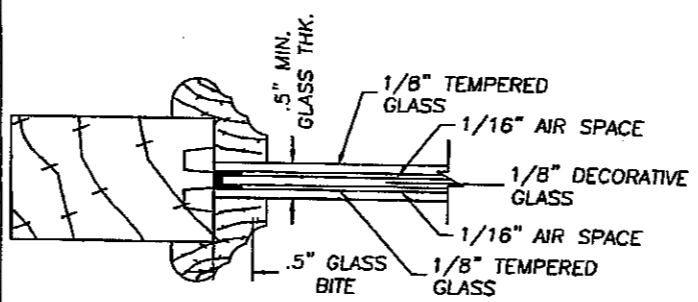
ITEM	DESCRIPTION	MATERIAL
1	STYLE & RAIL 8-D WOOD DOOR (MAHOGANY & OAK)	WOOD
2	HEAD JAMB FINGER JOINTED MAHOGANY WITH .0625 CLEAR MAHOGANY VENEER	MAHOGANY
3	HINGE JAMB FINGER JOINTED MAHOGANY WITH .0625 CLEAR MAHOGANY VENEER	MAHOGANY
4	SIDELITE BLANK JAMB FINGER JOINTED MAHOGANY WITH .0625 CLEAR MAHOGANY VENEER	MAHOGANY
5	1 PIECE WOOD ASTRAGAL	WOOD
6	OUTSWING HIGH DAM BUMP THRESHOLD BY IMPERIAL .051" ALUM.	ALUM.
7	NOT USED	-
8	4" x 4" BUTT RADIUS HINGE	STEEL
9	ENDURA FORCE 5 COMPRESSION WEATHERSTRIPPING	FOAM
10	SILICON CAULK	SILICONE
11	PL CONSTRUCTION ADHESIVE	-
12	NOT USED	-
13	2x INNER WOOD TEST BUCK	WOOD
14	MAX. 1/4" SHIM MATERIAL	WOOD
15	KWIKSET TITAN SERIRES LATCH BOLT (ANSI GRADE II)	-
16	KWIKSET TITAN SERIRES DEAD BOLT (ANSI GRADE II)	-
17	SCHLAGE ULTIMA SERIRES LATCH BOLT (ANSI GRADE II)	-
18	SCHLAGE ULTIMA SERIRES DEAD BOLT (ANSI GRADE II)	-
19	IVES NO. 454 SURFACE BOLT	STEEL
20	NOT USED	-
21	1/2" INSULATED GLASS	GLASS
22	3/8" INSULATED GLASS	GLASS
23	3/4" INSULATED GLASS	GLASS
24	10-24 SEX BOLT	STEEL
25	#8 x 2.5" PFH WOOD SCREW	STEEL
26	#10 x 3.0" PFH WOOD SCREW	STEEL
27	#10 x 1.0" PFH WOOD SCREW	STEEL
28	#10 x 2.0" PFH WOOD SCREW	STEEL
29	BRAD TRIM NAIL 1" L.	STEEL
30	.6875" x 4.625" WOOD REINFORCEMENT	LVL
31	#10 x .75" PFH WOOD SCREW	STEEL
32	#10 x 2.5" PFH WOOD SCREW	STEEL
33	3/16" TAPCON ANCHOR	STEEL
34	LATCH JAMB FINGER JOINTED MAHOGANY WITH .0625 CLEAR MAHOGANY VENEER	MAHOGANY



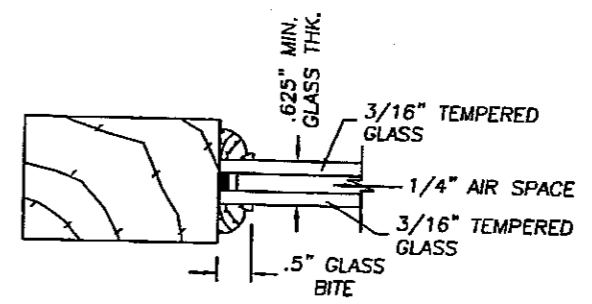
ST. CHARLES 3/4 LITE GLAZING DETAIL
3/4" INSULATED GLASS



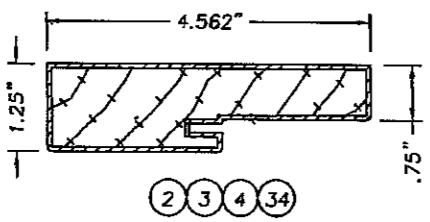
DELTA 3/4 LITE GLAZING DETAIL
1/2" INSULATED GLASS



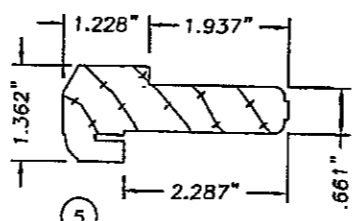
ELAN 3/4 LITE GLAZING DETAIL
1/2" INSULATED GLASS



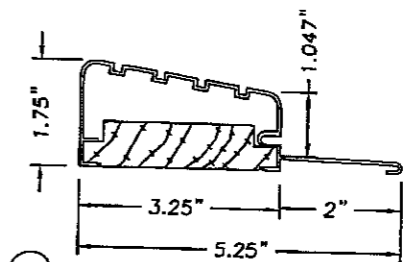
TRUE DIVIDED FULL LITE GLAZING DETAIL
5/8" INSULATED GLASS



WOOD JAMB FINGER JOINTED MAHOGANY WITH .0625 CLEAR MAHOGANY VENEER

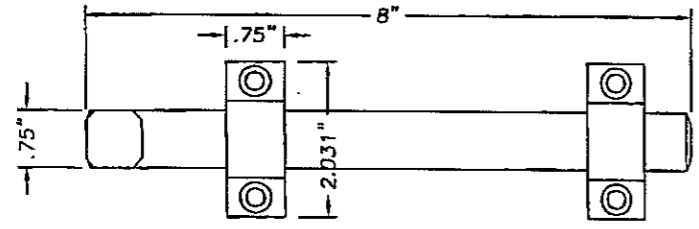


(1) PIECE WOOD ASTRAGAL

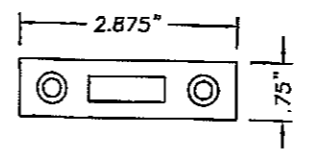


(6) IMPERIAL OUTSWING BUMP FACE ALUMINUM THRESHOLD

(ATTACH THRESHOLD TO JAMB WITH (2) #8 x 3" DECK SCREWS FROM THE THRESHOLD UP INTO THE STOP AND (4) 16 GA. x 1.75" LONG 0.5" CROWN STAPLES.)



(19) SURFACE BOLT (IVES, MODEL 455 .25" STEEL)



SURFACE BOLT STRIKE (IVES .125" STEEL)

MOULDING ASSOCIATES INCORPORATED
933 HENSLEY LANE
WYLIE, TX 75098
PHONE: 800.394.6680

PRODUCT: STYLE & RAIL 8-D OR 8-O OPAQUE WOOD DOOR OUT-SWING UNIT
PART OR ASSEMBLY: UNIT COMPONENTS, BILL OF MATERIAL & GLAZING DETAILS

NO.	DATE	ADD ANCHORS	LR/	BY
1	07/27/03			

RW BUILDING CONSULTANTS, INC.
813.684.3831

Approved as complying with the Florida Building Code
Date 04/13/05
NOAR 03-0216.01
Miami Code Product Control
By *Chanda Brown*

DATE: 5/17/02
SCALE: N.T.S.
DWG. BY: WLN
CHK. BY: RW
DRAWING NO.: S-2226
SHEET 10 OF 10